



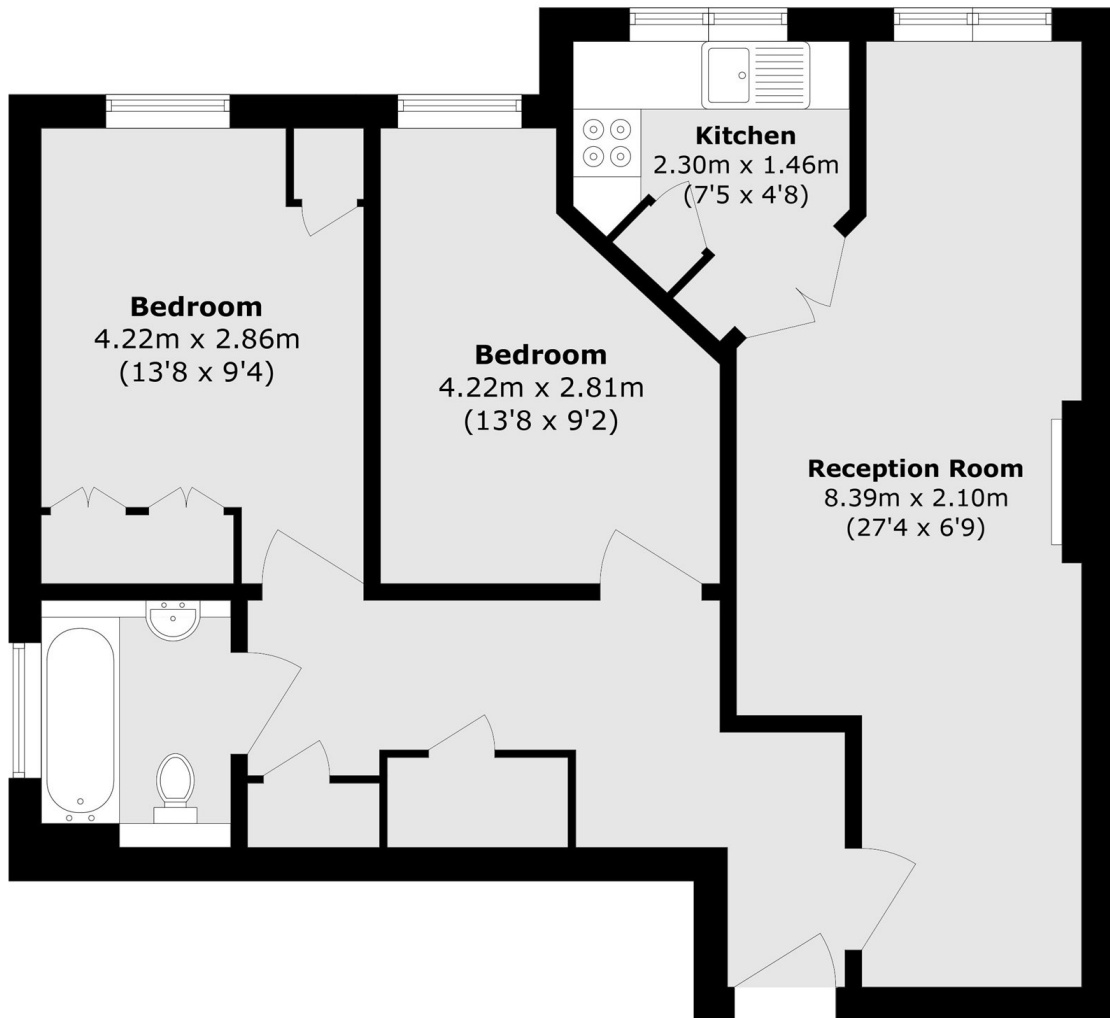
Farnham Close, N20

£160,000

Being Sold via Secure Sale online bidding, Terms and Conditions apply, Starting Bid £180,000. The property features a spacious entrance hall with excellent built-in storage, a generous reception/ dining room with double doors into a fitted kitchen, two good-sized double bedrooms with fitted wardrobes and a bathroom suite. Also benefits from a warden-assisted environment, residents' lounge, laundry facilities, guest suite and well-maintained communal gardens, together with off-street residents' parking.

Conveniently located for local shops, cafes, bus routes and nearby Totteridge & Whetstone Underground and Oakleigh Park mainline station.

- Warden Assisted Retirement Block • Two Bedrooms • Communal Garden •
- No Onward Chain • Communal Lounge • Parking •



Total area (approx.): 66.3 sq. m (713.6 sq. ft)

David Conway
020 8422 5222

Energy Rating: D We aim to make our particulars both accurate and reliable. However they are not guaranteed; nor do they form part of an offer or contract. If you require clarification on any points then please contact us, especially if you're travelling some distance to view. Please note that appliances and heating systems have not been tested and therefore no warranties can be given as to their good working order.